

WHY CIFA



Truck Pumps CLASSIC Series

WHY CIFA



USER FRIENDLY TRUCK PUMPS

With the Classic line CIFA aims to deliver essential and easy to use truck mounted pumps available in stock. The Classic line allows to access the best purchasing conditions thanks to basic choices of options and configuration, nevertheless maintaining the typical technological elements of our pumps.



TESTING



TEC TESTING EUROPEAN CENTER



READY FOR DELIVERY

LEASING



Available in Italy, Russia, China, South Africa, Australia, USA and Germany

MANUFACTURING	CIFA HUNAN (CN)
TRUCK ASSEMBLY	CIFA ITALY
TESTING	CIFA ITALY
CE CERTIFICATION	CIFA ITALY
WARRANTY	CIFA ITALY

MOUNTED ON ALL TRUCK BRANDS



CIFA truck pumps can be mounted on all truck brands. According to CIFA truck specifications documentation

TRAINING FOR OPERATORS





PLACING BOOMS
Available lengths to reach all distances.



STABILIZATIONS
Different types of stabilization in order to guarantee a safe work in a small area.

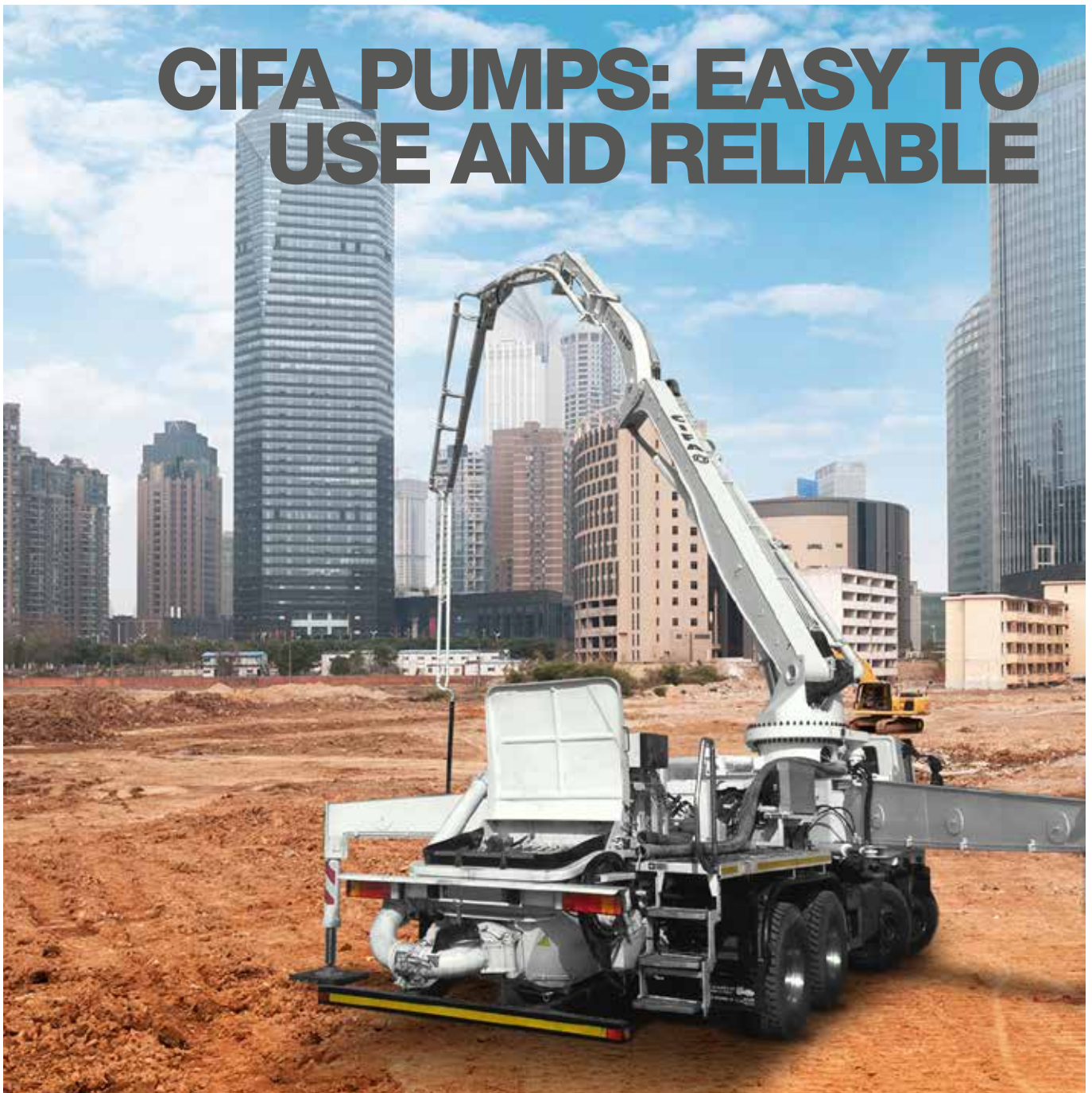


PUMPING UNITS
An open-loop pumping unit to guarantee maximum reliability and lowest maintenance.



FINISHING
White colour as standard painting.

CIFA PUMPS: EASY TO USE AND RELIABLE





PLACING BOOM



STRENGTH AND RELIABILITY:

The booms mounted on CIFA truck pumps combine both strength and reliability. Each section of the boom has been designed for maximum structural resistance and fatigue strength. These advanced booms reduce to a minimum the areas subjected to stress intensification when in operation.

VERSATILITY AND FLEXIBILITY:

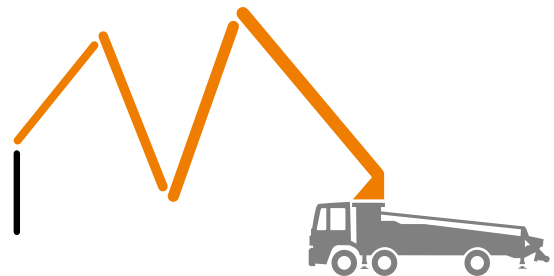
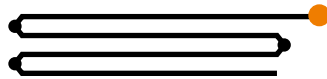
The different configurations of the booms on CIFA truck pumps ensure the greatest operative versatility and enable to reach almost any part of the construction yard, even those accessible with the most difficulty. Complete working flexibility together with great working speed, allows the complete extension of the boom and its perfect positioning in few minutes.

Z Type

Quick opening operations for concrete pouring near and far from the truck pump.

Available for:

K36C - K38C

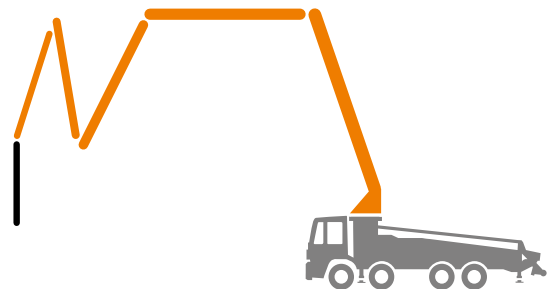


RZ Type

Ideal for 5 and 6 sections boom. It provides maximum flexibility by combining R+Z solutions.

Available for:

K40C - K41C - K49C - K56C



The structural strength and stiffness of the sections ensure limited oscillations even on longer booms.

The working speed, guarantees the complete extension of the boom and its perfect positioning within few minutes.

FOLDING SYSTEMS



LSC LIGHT STABILITY CONTROL



The system, available on demand, allows the complete movement of the boom when the outriggers are 100% opened.

All outriggers are designed to stabilize the machine in the right way in extraordinary tight spaces.

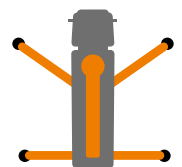
The sequences of the extension phase are quick in order to accelerate the stabilization.

Every Swing-out can be used as tank; the capacity goes from 400 to 700 litres per each swing-out.

STABILIZATION

Front: **Single telescopic X style**
Rear: **Single horizontal**

Available for:
K36C



Front: **Single telescopic X style**
Rear: **Swing-out**

Available for:
K38C - K40C



Front: **Double telescopic X style**
Rear: **Swing-out**

Available for:
K41C - K49C - K56C





PUMPING UNIT

Completely removable, the pumping unit ensures gentle, continuous and regular flow. This technology guarantees an extremely efficient system for pumping different types of concrete, with aggregates of all sizes, reducing the number of cycles per minute while maintaining the same flow rate, thus ensuring less wear and longer life.

PU1207 Open Loop



Available for:
K36C

PU1506 Open Loop



Available for:
K38C - K41C

PU1607 Open Loop



Available for:
K40C

PU1708 Open Loop

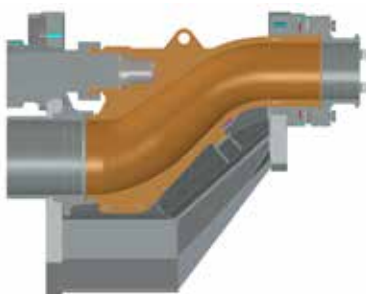


Available for:
K49C

PU1908 Closed Loop



Available for:
K56C



"S" VALVE:

The structure is made with varying thickness to achieve maximum resistance to wear even when using difficult types of concrete.



WEAR RING AND WEAR PLATE:

The ring and the plate are made of special anti wear material against abrasion and stress due to the concrete flow.

CONTROL SYSTEMS



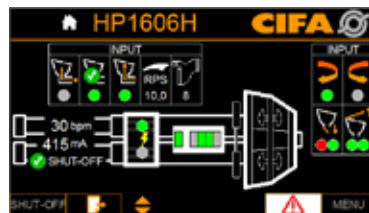
EASYTRONIC is the user-friendly control system made by CIFA to easy manage the truck puck during the operation at the job site. Furthermore, thanks to EASYTRONIC, the operator receives the most important data from the machine, such as: Working areas, cubic meters pumped, number of cycles, RPS setting, Cycles in pumping or suctioning, shut-off activated.

Easytronic



COUNTERS

The system collects and Shows main data.



PUMPING UNIT MANAGEMENT

The system manage the pumping unit optimizing the performance.



DIAGNOSTICS

The system provides a detailed analysis of the working phase.

DATA SHEET



K36C

PLACING BOOM	5Z 36/32
PUMPING UNIT	PU1207
DRIVEN BY	GEAR BOX



K38C

PLACING BOOM	4Z 38/32
PUMPING UNIT	PU1506
DRIVEN BY	GEAR BOX



K40C

PLACING BOOM	5RZ 40/36
PUMPING UNIT	PU1607
DRIVEN BY	GEAR BOX



K41C

PLACING BOOM	5RZ 41/37
PUMPING UNIT	PU1506
DRIVEN BY	GEAR BOX



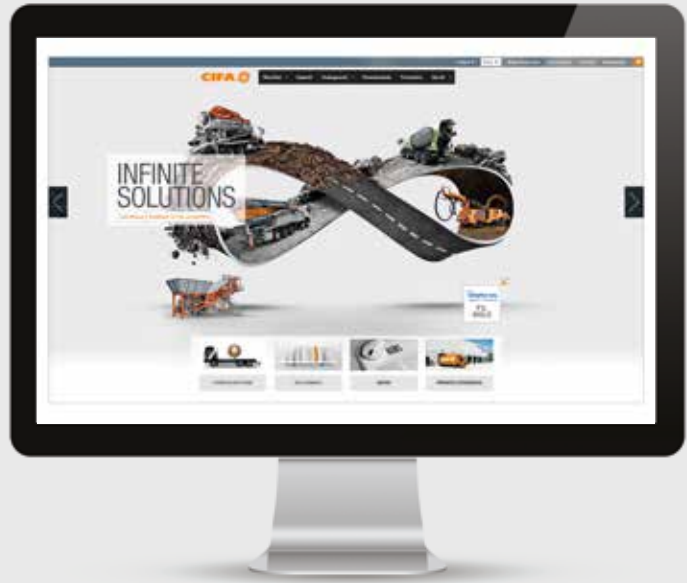
K49C

PLACING BOOM	6RZ 49/45
PUMPING UNIT	PU1708
DRIVEN BY	GEAR BOX



K56C

PLACING BOOM	6RZ 56/52
PUMPING UNIT	PU1908
DRIVEN BY	GEAR BOX



Discover more at www.cifa.com

Distributor



CIFA S.p.A.

Via Stati Uniti d'America, 26
20030 Senago (Milano) - Italy

tel. +39.02.990131

fax. +39.02.9981157

sales@cifa.com

www.cifa.com

